



Supporting your SEN students

from assessment
and intervention
to examination

Tools and resources to support
your SEN students throughout their
educational journey

Supporting every learner, no matter their need

We believe everyone should have the same opportunity to achieve their full potential and to be successful at school. That's why we're committed to helping create environments that reflect all learning styles and abilities.

We are here to help you to support your students throughout their educational journey from assessment and intervention to examination, allowing them to succeed no matter their need.

Our range of tools and resources can allow teachers, parents and SENCOs to enable learners to develop their knowledge.



Primary school journey

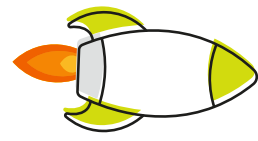
Key

Assessment:
Identifying a disorder

Intervention:
Educational support resources

Please note that many of the intervention resources are not SEN specific but can help support SEN students during their educational journey

Stage 1: Assessment

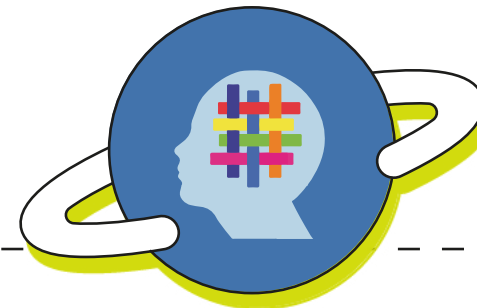


[Child Assessment](#)

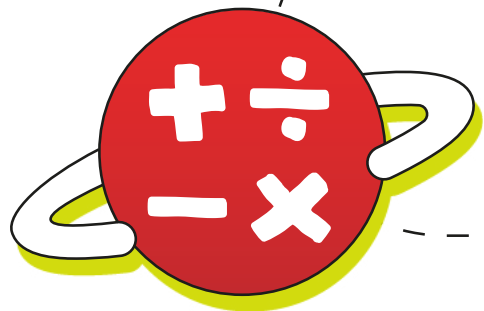
Stage 2: Intervention



[Bug Club](#)



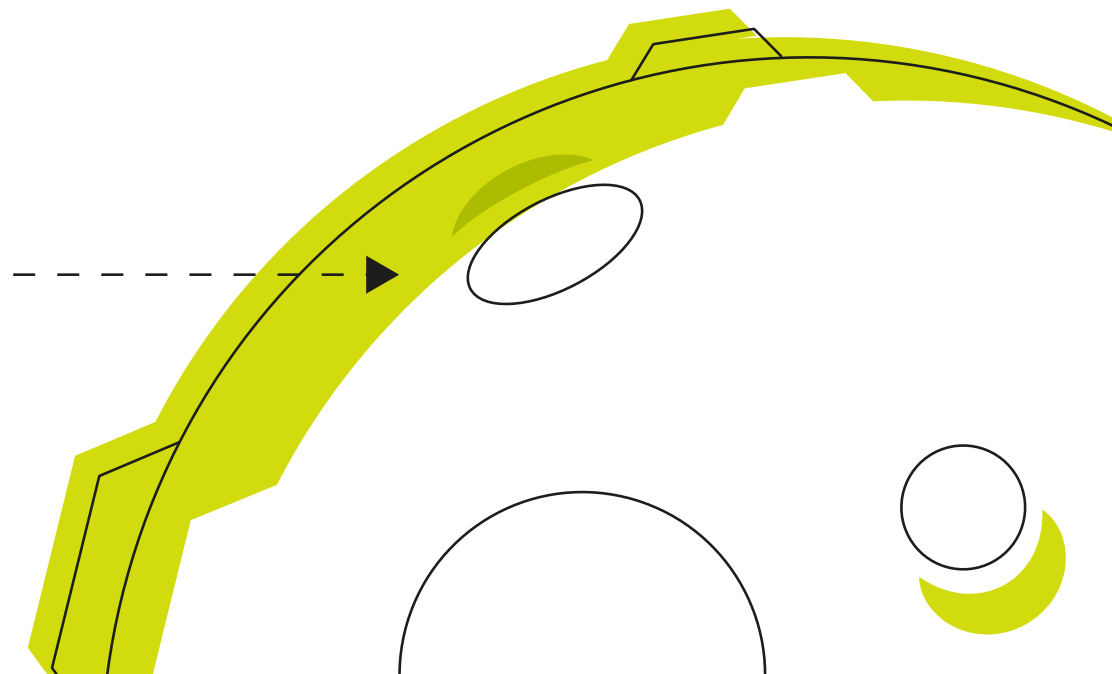
[Weaving Well-Being](#)



[The Maths Factor](#)



[Rapid](#)



Secondary school journey

Key

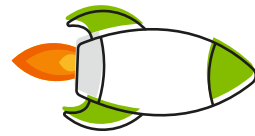
Assessment:
Identifying a disorder

Intervention:
Educational support resources

Modification: Exam papers adapted to student need

Please note that many of the intervention resources are not SEN specific but can help support SEN students during their educational journey

Stage 1:
Assessment



[Access Arrangements and the Disabled Students' Allowance](#)

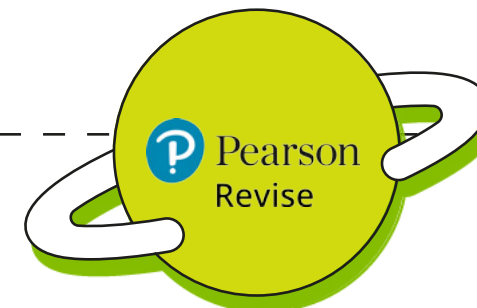


[Mental Health](#)

Stage 2:
Intervention



[Target](#)



[Pearson Revise](#)



[Pearson Tutoring](#)

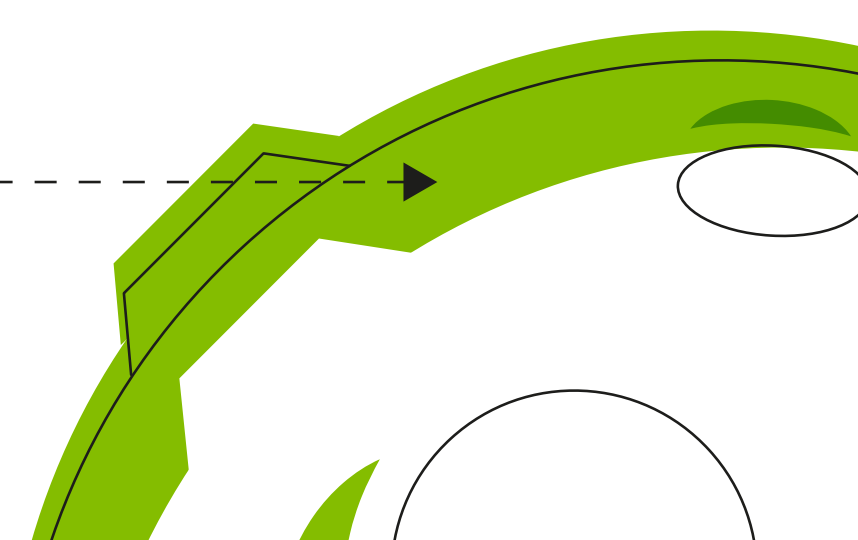


[Rapid](#)

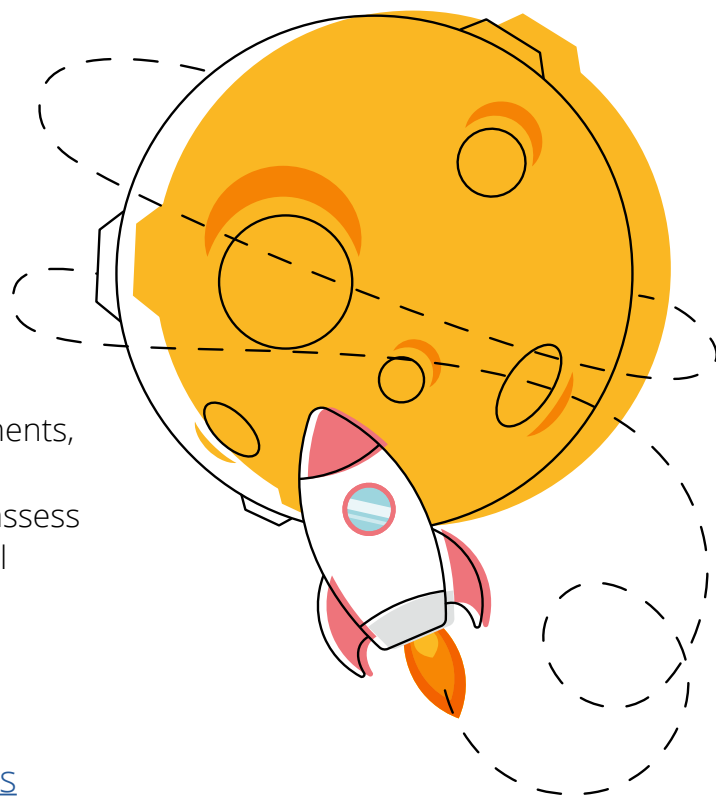
Stage 3:
Modifications



[Special Requirements](#)



Learn more on...



[Clinical Assessments](#)



View our range of quality assessments, efficient testing tools and digital resources that can help identify, assess and support students with Special Educational Needs.

[Clinical Educational resources](#)



Digital resources for education professionals working with students of all ages, in mainstream and special education settings, who may need additional learning support.

[SEN assessments](#)



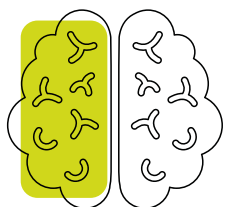
We support education professionals working with students of all ages, in mainstream and special education settings, who may need additional learning support. Together, we can help your students mature, learn more effectively and reach their potential.

[Accessibility](#)



All young people should be able to access their learning in a way that meets their individual needs to have the achieve their potential and succeed throughout their lives. Visit our Diversity and Inclusion - Accessibility area to find resources and tools to support schools.

[Mental Health and Wellbeing](#)



We're passionate about working with educators to create a culture of positive wellbeing and mental health in schools. Find resources suitable for all, from mindfulness practice to safeguarding, whole schools programmes and fun activities to support wellbeing.